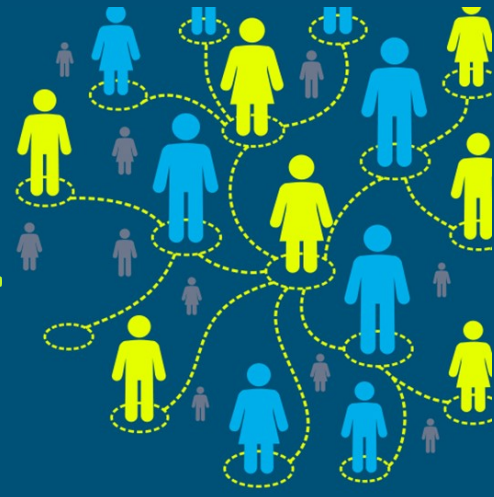


Domestic Abuse Child and Family Court Liaison Worker



The domestic abuse child and family court liaison worker is part of a new initiative by Cleveland Police's Crime Commissioner to provide help and support to victims of domestic abuse who are worried about going through the family court process.

Support will be tailored to your needs. This may be around civil injunctions and protection orders, child contact arrangements both public and private, guidance in self-representing, accessing your police information and divorce/separation.

Types of support

- Provide guidance to unrepresented victims around conduct in court/special measures/applying for information from the police.
- Signposting and referring to services for emotional and practical support.
- Signposting to solicitors for advice, representation and assessment for legal aid.
- Other support that may be required.

TEL: 07595010940

Email: fclo@cleveland.pnn.police.uk

www.clevelandpolice.co.uk



**CLEVELAND
POLICE**

